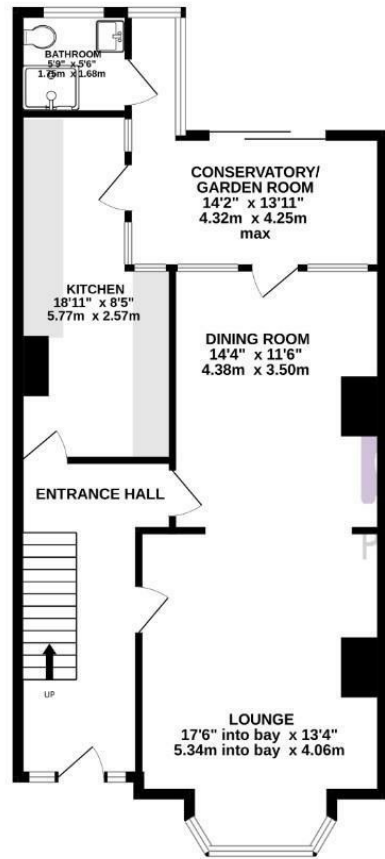
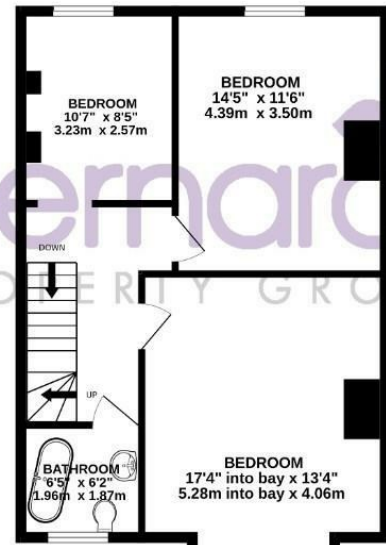


GROUND FLOOR
776 sq.ft. (72.0 sq.m.) approx.



1ST FLOOR
580 sq.ft. (53.8 sq.m.) approx.

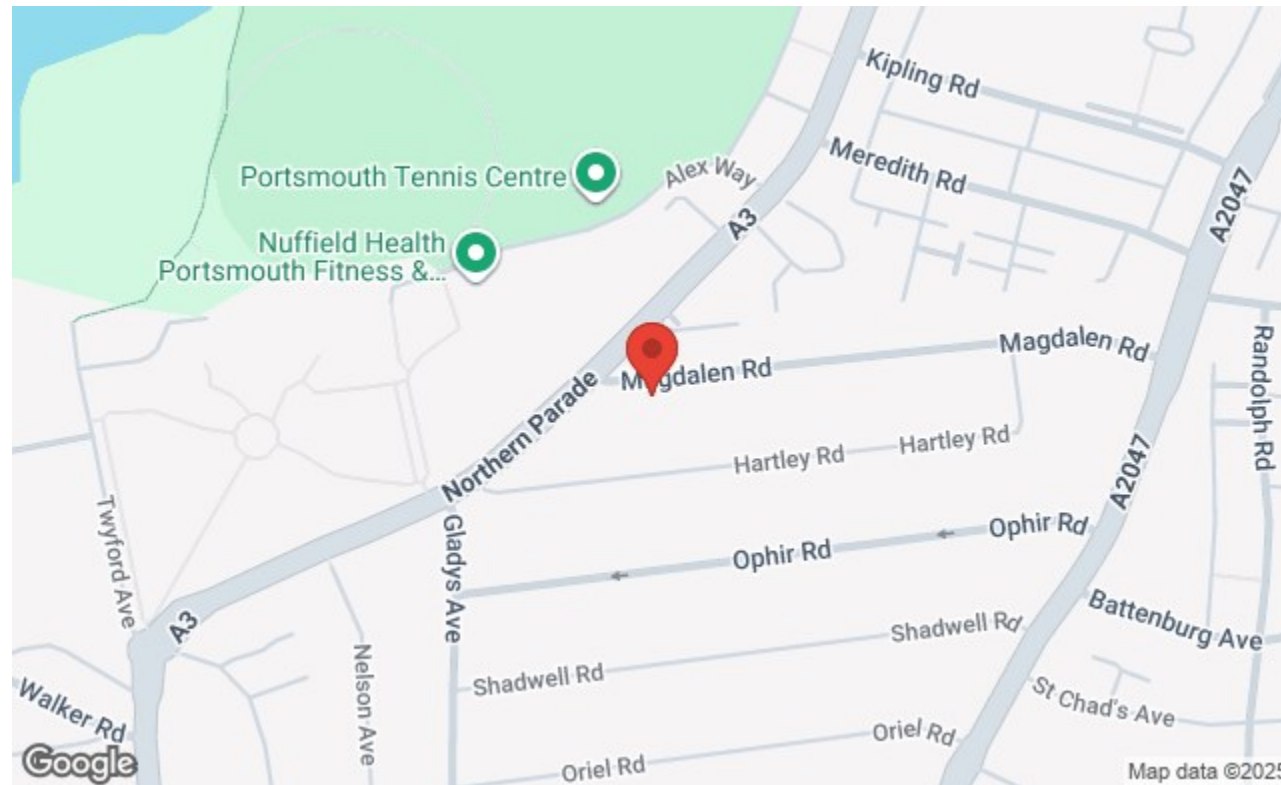


2ND FLOOR
262 sq.ft. (24.3 sq.m.) approx.



TOTAL FLOOR AREA : 1617 sq.ft. (150.2 sq.m.) approx.

Whilst every attempt has been made to ensure the accuracy of the floorplan contained here, measurements of doors, windows, rooms and any other items are approximate and no responsibility is taken for any error, omission or mis-statement. This plan is for illustrative purposes only and should be used as such by any prospective purchaser. The services, systems and appliances shown have not been tested and no guarantee as to their operability or efficiency can be given.
Made with Metropix ©2025



129 London Road, Portsmouth, Hampshire, PO2 9AA
t: 02392 728090



FOR SALE

Offers Over £350,000

Magdalen Road, Portsmouth PO2 9HT

bernards
THE ESTATE AGENTS



4 2 2

HIGHLIGHTS

- DOUBLE BAY & FORECOURT
- FOUR BEDROOMS
- OPEN PLAN LOUNGE/DINER
- SPACIOUS KITCHEN
- TWO BATHROOMS
- CONSERVATORY
- SOUTH FACING GARDEN
- FAMILY HOME
- PERIOD FEATURES
- SOUGHT AFTER AREA

Situated in Magdalen Road, this beautiful terraced house presents an excellent opportunity for families seeking a comfortable and spacious home. Boasting four well-proportioned bedrooms, this property is perfect for those needing ample living space.

As you enter, you are greeted by an airy and bright hallway, leading into the inviting open plan lounge and dining area, adorned with period features that add character and warmth to the home. This versatile space is ideal for both entertaining guests and enjoying family time. The kitchen, conveniently located, offers practicality and functionality, making meal preparation a breeze.

With two bathrooms, this property ensures that morning routines run smoothly, catering to the needs of a busy family. The layout of the house is thoughtfully designed to provide both privacy and

communal areas, making it a perfect family home. The fabulous garden with paved patio for alfresco dining is another great feature of this property; shaded by lovely Grape vine, raised deck with private & sheltered seating, a small pond and finally a large brick built workshop to the rear of the garden!

Situated in a popular area, this residence benefits from local amenities, schools, and parks, making it an ideal choice for families looking to settle in a vibrant community. This property is not just a house; it is a place where memories can be made and cherished for years to come. Don't miss the chance to view this lovely home that combines period charm with modern family living.

Call today to arrange a viewing
02392 728090
www.bernardsestates.co.uk



